



CUMI

**REFRACTORY SOLUTIONS
FOR FOUNDRY INDUSTRY**



CARBORUNDUM UNIVERSAL LIMITED

SUPER REFRACTORIES



Founded in 1900, the INR 300 Billion Murugappa Group is one of India's leading business conglomerates. The Group has 28 businesses including nine listed Companies traded in NSE & BSE. Headquartered in Chennai, the major Companies of the Group include Carborundum Universal Ltd., Cholamandalam Investment and Finance Company Ltd., Cholamandalam MS General Insurance Company Ltd., Coromandel International Ltd., Coromandel Engineering Company Ltd., E.I.D. Parry (India) Ltd., Parry Agro Industries Ltd., Parry Sugar industries Ltd, Shanthi Gears Ltd., Tube Investments of India Ltd., and Wendt (India) Ltd. The Group fosters an environment of professionalism and has a workforce of over 32,000 employees.



CUMI was founded in 1954 as a tripartite collaboration between the Murugappa Group, The Carborundum Co., USA and the Universal Grinding Wheel Co. Ltd., U.K.

The company pioneered the manufacture of Coated Abrasives and Bonded Abrasives in India in addition to the manufacture of Super Refractories, Electro Minerals, Industrial Ceramics and Ceramic Fibres. Today the company's range of over 20,000 different varieties of abrasives, refractory products and electro-minerals are manufactured in ten locations across various parts of the country.

With state-of-the-art facilities and strategic alliances with global partners, CUMI has achieved a reputation for quality and innovation. CUMI is one of the five manufacturers in the world with fully integrated operations that include mining, fusing, wind and hydro power stations, manufacturing, marketing and distribution.

CUMI Super Refractories

A market leader in the manufacture of specialty refractory products in India since 1965 with technical know-how from Carborundum USA. The division specializes in the manufacture of both fired and monolithics range of refractories catering to the critical and demanding high temperature applications for various industrial applications.

Primary product lines in the Fired range include Silicon Carbide, Nitride Bonded Silicon Carbide, Mullite, and Zircon- Mullite, High Alumina, and Insulating fire bricks.

The primary product lines in the monolithics range include the Conventional Castables, Low Cement Castables, Insulation Castables, Self-flow Castables, Gunning Materials, Ramming Masses and Laying Mortars.

Super Refractories is dedicated to providing our customers with the highest-quality, most highly effective products, systems and services. The products manufactured conform to the ISO 9001 Quality standards and procedures, ensuring customer satisfaction.

In addition to being a leading supplier of specialty refractory in the Indian market, we serve customers in the Middle East, Asia, Europe, North America, Australia, ASEAN and SAARC countries.

CUMI offers high performance monolithic products, dry ramming masses, precast & fired shapes for highly demanding application areas in ferrous & non-ferrous foundries including special & super-alloy casting for aviation and aero-space industries.



Prefabricated Foundry consumable

Launders

- Tailor-made Transfer Launder for moving Metal from Crucible to Mould Chamber
- Slag Retention
- Transferring Molten Metal Under Vacuum
- Cleaning Metal Through Floatation and Filtering
- Non-Wetting and Inert Launder Material
- Launder lengths up to 4m available
- Specialised Joints ensuring leak free pouring

Tundishes

- Transferring Metal from the Furnace to Moulds
- Cleaning and Filtering Metal
- Custom Designs to Suit Furnace Configuration
- Various high alumina materials for range of alloys

Spouts Crucibles One Shot Liners
Nozzles Splash Blocks

Distribution Boxes

- Single Use Refractories
- Custom made material solutions to suit alloy composition



Application Guidelines for Ferrous Foundry

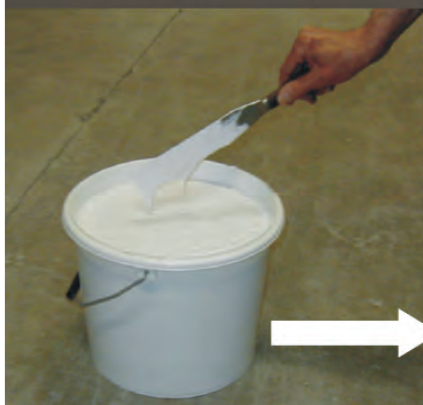
FERROUS FOUNDRY APPLICATIONS	CUMICAST EF 951M	CUMICRETE CA 392	CUMICRETE CA 66	CUMICRETE CK 14	CUMIFRAC R1	CUMIHICAST 90	CUMIHICAST EXTRA	CUMIHICAST SUPER	CUMILAG 29	CUMILAG 32	CUMILITE W	CUMIRAM RA 83	CUMIRAM EL2SRM	CUMIRAM RA20M	CUMIGUN M45SC	CUMICRETE CA392S	CUMILOX 201 HF	CUMILOX M SPL	CUMILITE HF	CUMILOX 92P	CUMILOX 70B
	Electric Arc Furnace Roof-Delta Section & Launder		■				■	■													
Coreless Induction Furnace Crucible Lining												■									
Coreless Induction Furnace Cover, Spout & Tops		■					■														
Channel Induction Furnace Main Bath/Reservoir			■																		
Channel Induction Furnace - Inductor Lining												■									
Channel Induction Furnace - Roof		■	■					■													
Channel Induction Furnace - Backup Insulation Layer									■												
Tundish	■																				
Tundish Baffle Plate																	■				
Collar and Top Plug in Casting																		■			
Crucible for Melting																			■		
Distribution Box																				■	
Bottom Pouring Nozzle																					■
Metallurgical Furnaces																					
Hot Face Insulation Brick								■	■	■											
Burner Blocks, Pier Blocks & Supports							■	■	■	■											
Heating Element Carrier Bricks & Shapes											■										
Foundry Casting Chills/Denseners					■																
Cupola Furnace													■	■							
Ladle																■					
Holding Furnace		■												■							



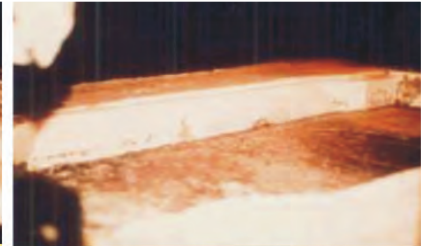
Application Guidelines for Non-Ferrous Foundries

NON-FERROUS FOUNDRY APPLICATIONS	CUMIHICAST EXTRA	CUMIBOND LA 102	CUMICRETE C 9 G	CUMICRETE CA 392	CUMICRETE CA 58	CUMICRETE CA 66	CUMICRETE CA 96	CUMICRETE CV 531	CUMICRETE CIV 101	CUMIHICAST 90	CUMIHICAST SUPER	CUMILITE W	CUMIRAM RA 20M	CUMIRAM RA 83	CUMIREX	FUSED SILICA	FUSED SILICA LC	MIDCAST	PLASCAST	ALCAST EXTRA	ALCAST EXTRA HS	ALBOND	MORBOD AL	MORFLOW 165 AL	MORFLOW 165	HIGUN 170	PLASGUN	MORGUN AL	ALPATCH	ALCOAT
	Aluminium & Aluminium Alloys																													
Reverberatory Furnace Roofs & Doors																														
Reverberatory Furnace Walls																														
Ladles																														
Coreless and Channel Induction Furnace Lining																														
Induction Furnace, Channel or Coreless, Upper Case(POT)																														
Induction Furnace, Channel, Inductor Back up																														
Induction Furnace, Lining, Coreless Coating & Lips																														
Melting & Holding Furnace																														
Melting & Holding Furnace Roof																														
Melting & Holding Furnace Roof Backup																														
Melting & Holding Furnace - Upper Walls																														
Melting & Holding Furnace - Lower Walls																														
Melting & Holding Furnace - Floor																														
Melting & Holding Furnace - Door																														
Melting & Holding Furnace - Door Jamb																														
Melting & Holding Furnace - Maintenance Gunning																														
Melting & Holding Furnace - Maintenance																														
Degassing, Filtration and Head Boxes																														
Launder																														
Repairing of Al Non Contact Areas																														
Copper & Copper Alloys																														
Melting and Holding Furnace - Main Body & Inductor																														
Furnace Cover																														
Reverberatory Furnace																														

Tri-Mor Alcoat – Refractory Coating



No Coating



Coated with Alcoat

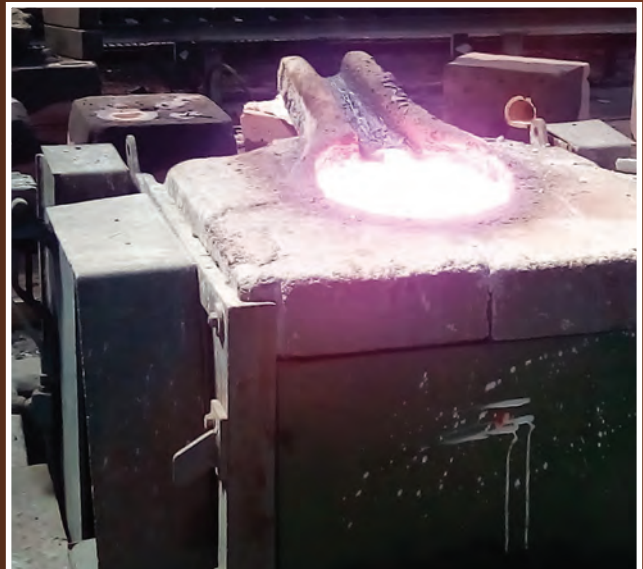
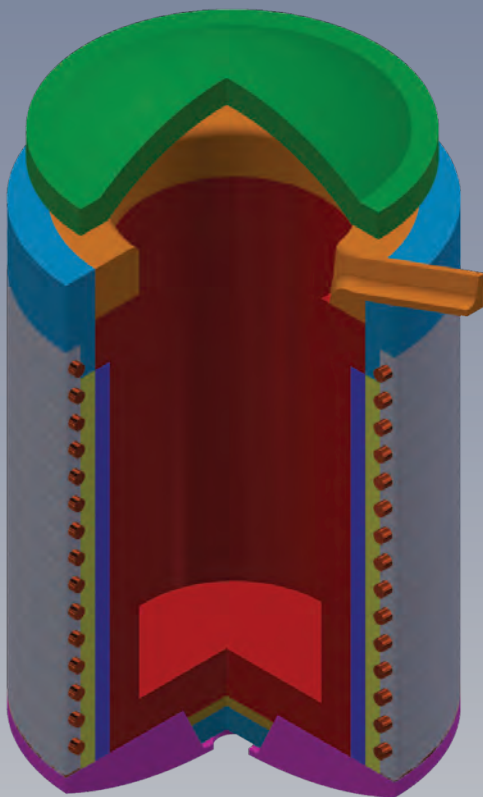
Die casting Holding Furnace after 6 Months operation

- Supplied ready to use
- Completely non-wetted by aluminium
- Suitable for launders, furnace linings, tools etc



Data Sheet : Dry Ramming Mass

PROPERTIES	UNIT	CUMIRAM DV 70S	CUMIRAM DV 92A	CUMIRAM DV 91A	CUMIRAM DV 91M	CUMIRAM DV 63A	CUMIRAM DV 63AC	CUMIRAM DV 87A	CUMIRAM DV 87A (PM)	CUMIRAM DV 94A	CUMIRAM DV 94 AF
Type of Metal		"Alloy Steel & Super Alloys"	Steel	Aluminium	Steel & Steel Alloy	Aluminium & Zinc	Copper	Steel & Steel Alloy	Steel & Steel Alloy	"Aluminium & Aluminium Alloys"	"Ferrous Metals & Alloys"
Chemical Analysis (Typical)											
MgO		29.0	5.00	0.50	91.0	0.30	0.30	12.0	11.5	0.05	0.05
SiO ₂		0.30	0.50	3.50	0.30	33.5	33.5	0.20	-	3.00	5.00
Al ₂ O ₃	%	70.5	92.0	91.5	6.50	64.0	64.0	87.0	78.0	94.5	94.0
Fe ₂ O ₃		0.05	0.30	0.15	0.20	0.85	0.85	0.10	-	0.05	0.05
Physical Properties (Typical)											
Packed Density	gm/cc	2.70	2.96	2.95	2.72	2.55	2.55	2.65	-	2.70	2.88
Rammed Density	gm/cc	2.77	3.02	3.02	2.75	2.60	2.60	2.75	-	2.85	3.05



Data Sheet : Ladle Lining

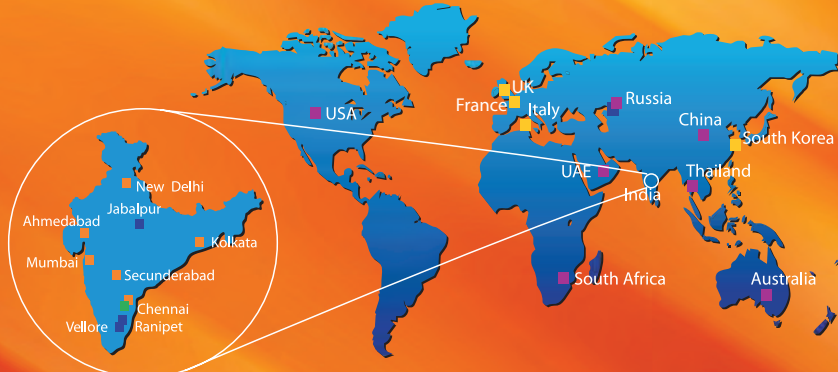
CHARACTERISTICS	UNIT	CUMICRETE CA 392 S	CUMICRETE CA 392 S (0-3 MM)	CUMICRETE CA 392 F	CUMICRETE CA 85 M	
Maximum Service Temperature	°C	1700	1700	1700	1650	
Maximum Grain Size	mm.	6	3	1	6	
Bulk Density Dried at 110°C / 24 Hrs.	gm/cc,min	2.70	2.60	2.50	2.60	
Cold Crushing Strength	Kg/cm ²					
	Dried at 110°C/24 Hrs	min.	550	400	250	500
	Fired at 1000°C/3 Hrs	min.	350	250	150	300
Fired at 1550°C/3 Hrs.	min.	550	450	550 at 1450°C	550 at 1450°C	
Permanent Linear Change	%					
	Fired at 1000°C/3 Hrs	max.	+/- 0.30	+/- 0.30	+/- 0.30	+/- 0.30
	Fired at 1550°C/3 Hrs	max.	+/- 1.00	+/- 1.00	±1.5 at 1450°C	±1.5 at 1450°C
Recommended Water Addition	%	8 -10	8-10	10-12	9 -11	
Chemical Analysis	%					
	Al ₂ O ₃	min.	87.0	87.0	87.0	84
	Fe ₂ O ₃	max.	1.5	1.5	1.5	1.8

CUMICRETE CA 392 S is offered in two grain size distribution based on requirement of customers
 CUMICRETE CA 392 F is specially designed for coil coating application for Induction Furnaces



Silicon Carbide Grains for Foundry industry





For more information please visit us at
www.cumi-murugappa.com/refractories/

Social Media Links:

- <https://www.facebook.com/cumi.official/>
- https://twitter.com/cumi_official
- <https://www.linkedin.com/company/carborundum-universal-limited>

CUMI's Worldwide Network at Your Service

Plants

Carborundum Universal Limited
 Plot Nos. 102 & 103, SIPCOT Industrial Complex,
 Phase II, Ranipet - 6325403
 Phone: +91 4172 244197 / 306700
 Fax: +91 4172 244982

Carborundum Universal Limited
 Mungileri Village, Vinnampalli Post, Katpadi Taluk
 Seerkadu, Vellore District - 632516
 Phone: +91 4172 306800, Fax: +91 4172 306830

Carborundum Universal Limited
 Plot No. 35, 37, 48-51, Adhantal Industrial Estate,
 PO Jabalpur - 482004, Madhya Pradesh
 Phone: +91 761 3265001 / 2 / 3 / 4 / 5
 Fax: +91 761 2680678

JSC Volzhsky Abrasive Works
 Volzhsky, Volgograd Region, Road 6, 18
 Russia - 404130, Email: export@vabz.ru

Registered Office:
 "Parry House", 6th Floor, 43, Moore Street,
 Chennai - 600001, Phone: +91 44 42216789
www.cumi-murugappa.com

Marketing Offices - India

Ahmedabad
 202 A & 202 B, 2nd Floor, Satkar Complex,
 Nr. Lal Bungalow Cross Road,
 Navrangpura, Ahmedabad-380006
 Contact : Mr. Prabhakar Jha
 Email: jhap@cumi.murugappa.com
 Mobile : +91 95890 15950

Chennai:
 Dare House Extension, 1st Floor, 234, NSC Bose Road
 Chennai 600 001. Ph: +91 44 30006075 / 6061
 Contact: Mr. N. Thiagarajan
 Email: thiagarajann@cumi.murugappa.com
 Phone: +91 44 30006063 , Mobile: +91 98404 30332

Kolkata:
 Shrichi Towers, 1st Floor, Unit - IA
 686- Anandapur, Kasba, Kolkata-700107
 Phone : +91 33 3024 9674, +91 33 3023 8069
 Contact : Mr. Siddhartha Ray Chaudhuri
 Email: chaudhurisr@cumi.murugappa.com
 Mobile: +91 90073 92718

Mumbai:
 P.B. No. 962, United India Bldg. III Floor,
 Sir Pheroze Shah Mehta Road, Mumbai - 400001
 Phone: +91-8767160582
 Contact : Mr. Subhasis Gangopadhyay
 Email: gangopadhyays@cumi.murugappa.com
 Mobile: +91 98671 86048

New Delhi
 Refractory Division
 11/5B, Pusa Road, 2nd Floor, Param Tower
 Opposite Telephone Exchange, New Delhi - 110005
 Contact : Mr. Nimit Chaudhary
 Email: chaudharyn@cumi.murugappa.com
 Phone: +91 11 3090 1919, Mobile: +91 90151 48803

Secunderabad
 Plot I - 8 - 208, Door No. 106 & 107,
 1st Floor Golden Hawk Building, Sindhi Colony,
 P G Road, Secunderabad - 500 003
 Contact: Mr. N. Thiagarajan
 Email: thiagarajann@cumi.murugappa.com
 Mobile: +91 98404 30332

Marketing Offices - Exports

Dare House Extension, 1st Floor
 234, NSC Bose Road
 Chennai : 600001
 Phone : +91 44 3000 6061
 Contact : Mr. V.T. Eswaran
 Email: thandeswaranv@cumi.murugappa.com
 Mobile: +91 99441 62444

Global Associates

UK & France
 Anderman & Company Ltd.
 Unit 117, Oak Drive, Hartlebury Trading Estate,
 Hartlebury, Kidderminster, DY10 4JB, UK.
 Tel : +44 (0) 1299 252480
 Fax : +44 (0) 1299 252481
 Email: customerservice@earthwaterfire.com
www.earthwaterfire.com

Italy
 Enrico LUGLI
 Agenzia di Vendita s.n.c.,
 Via Giovanni XXIII 38, 16132 GENOVA-ITALY
 Phone : + 010 522 00 11, Fax : + 010 522 09 22
 E-mail : lugli.snc@tin.it

South Korea
 Hanse Refractories Co., Ltd
 405, Baekbong-gil, Cheongbuk-myeon,
 Pyeongtaek-si, Gyeonggi-do,
 Republic of Korea 17798
 Mobile: +82 10-8965-7081
 Phone: 031-683-0636, Fax: 031-683-0639
 Contact : Young Ki Lee
 E-mail: formkthanse@naver.com

Subsidiaries

Australia
 CUMI (Australia) Pty Ltd,
 29 Gipps Street PO Box 142, Carrington, NSW 2294, Australia
 Phone : + 61 02 4940 0035, Fax : + 61 02 4940 0037
 Contact : Mr. Sushil Kumar, E-mail : usk@cumi.com.au

China
 CUMI Abrasives and Ceramics Co., Ltd,
 No.9, Donghuan Road, Yanjiao Development Zone, Sanhe City,
 Hebei Province, P.R. China, 065201
 Phone : + 86 316 18630663335
 Contact : Mr. Darryl Wu Feng
 E-mail: darrylwufeng@cumi.murugappa.com

Russia
 Volzhsky Abrasive Works, Building No.18,
 Highway 6, Volzhsky, Volgograd Region, Russia 404 130
 Email: export@vabz.ru

South Africa
 Foskor Zirconia Pty Ltd
 27 Selati Road, P.O.Box 1, Phalaborwa, 1390
 +27 (0) 15 789 2004, +27 (0) 15 781 5861
 Contact Person Mr.kim Hodierne – CEO

Thailand
 Wendt Grinding Technologies Ltd.
 109/21, Moo4, Tambol, Pluakdaeng,
 AmpurPluakdaeng, Rayang - 21140, Thailand
 Phone : 66 (0)38-955490 (Dir), 955491-2,
 Fax : 66 (0)38-955493, Contact : Mr. Praveen Jaduvanshi
 E-mail: praveen@wendt-thai.com

USA
 CUMI America Inc.
 1119 Aviation Blvd, Hebron, KY 41048, US
 Phone: +1 844 286 4872, +1 859 372 6606
 Fax: +1 859 372 6607
 Contact : Mr. Ronald Smith
 E-mail : rsmith@cumiusa.com

West Asia & Africa
 CUMI Middle East Fze.
 P.O. Box 10559, RakFreeTrade Zone,
 Ras Al Khaimah, UAE
 Phone : + 971 07 2046181, Fax : + 971 07 2046182
 Contact : Mr. D. Srinivasan
 E-mail : srinivasand@cumi.murugappa.com

JANUARY 2018