

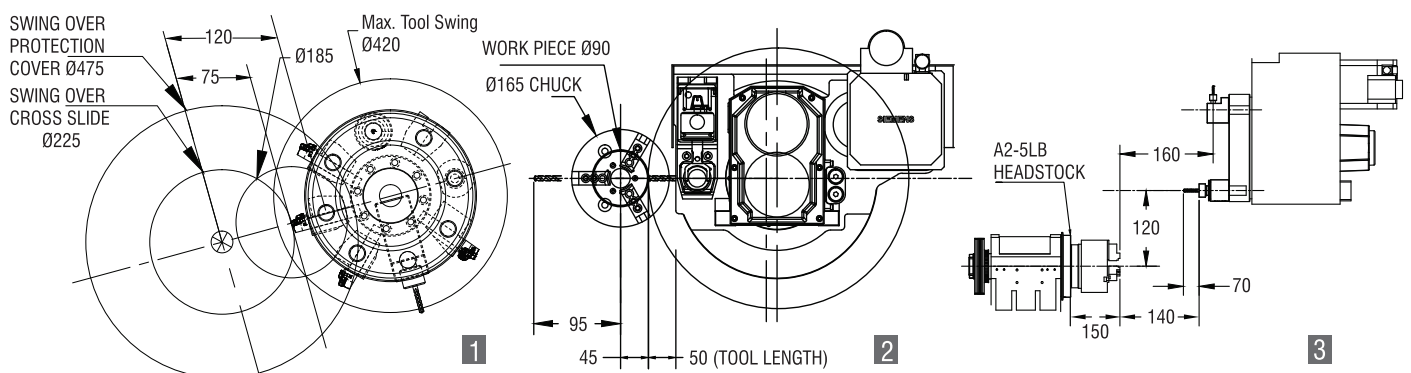
## Uniturn 400HD TM, Uniturn 300HD TM & Uniturn 300 HD

Heavy duty CNC machines with advanced features which are flexible enough to meet your Turning & Milling requirements delivering highest precision.

### UNITURN 300 HD TM



#### UNITURN 300HD TM- TOOL INTERFERENCE DIAGRAM DTT 80 WITH 8 STATION



1 Max Ø185 when turning tool holder is at job center and when two adjacent holders are either turning or boring holders

2 Max drill length on radial live tool head and max job diameter (Ø90mm) for radial drilling.

3 Max job length (70mm) that can be drilled with axial live tool head.

## UNITURN 400 H $\phi$ ™

### STANDARD ACCESSORIES

- Hydraulic 165X3 Jaw chuck and Closed cylinder (A2-5LB)
- Hydraulic 200X3 Jaw chuck and Closed cylinder (A2-6)
- One set of soft jaws
- Hydraulic Tailstock
- Hydraulic Power pack
- Coolant supply equipment
- Centralized lubrication equipment
- Chip trolley
- Work light
- Foot Switch for Chuck
- 12 Station-2 Pitch disc bidirectional "PRAGATI DTT 80" Live tool Turret
- Set of Manuals

### TOOL HOLDERS

- RH Turning - 4
- RH Radial (Reverse) - 1
- RH Axial Tool Holder - 1
- Boring Tool Holder - 4
- Boring Bar Dia 30x16, 30x20, 30x32, 30x25
- Set of Machine Mounting pads

### OPTIONAL ACCESSORIES

- Chip Conveyor
- Coolant gun
- Panel A/C
- Parts catcher/Tray
- Air Blast for Chuck jaw cleaning
- Aden Lamp (Yellow/Red/Green)
- Collet chuck
- Hollow cylinder
- Sauter turret with live tools
- Axial Live Tool Head
- Radial Live Tool Head
- Foot switch for tailstock
- 2Jaw chuck
- 4Jaw chuck
- Bar puller

## UNITURN 300 H $\phi$ ™

### STANDARD ACCESSORIES

- Hydraulic 165X3 Jaw chuck and Closed cylinder (A2-5LB)
- Hydraulic 200X3 Jaw chuck and Closed cylinder (A2-6)
- One set of soft jaws
- Hydraulic Tailstock
- Hydraulic Power pack
- Coolant supply equipment
- Centralized lubrication equipment
- Chip trolley
- Work light
- Foot Switch for Chuck
- 12 Station-2 Pitch disc bidirectional "PRAGATI DTT 80" Live tool Turret
- Set of Manuals

### TOOL HOLDERS

- RH Turning - 4
- RH Radial (Reverse) - 1
- RH Axial Tool Holder - 1
- Boring Tool Holder - 4
- Boring Bar Dia 30x16, 30x20, 30x32, 30x25
- Set of Machine Mounting pads

### OPTIONAL ACCESSORIES

- Chip Conveyor
- Coolant gun
- Panel A/C
- Parts catcher/Tray
- Air Blast for Chuck jaw cleaning
- Aden Lamp (Yellow/Red/Green)
- Collet chuck
- Hollow cylinder
- Sauter turret with live tools
- Axial Live Tool Head
- Radial Live Tool Head
- Foot switch for tailstock
- 2Jaw chuck
- 4Jaw chuck
- Bar puller

## UNITURN 300 H $\phi$ ™

### STANDARD ACCESSORIES

- Hydraulic chuck and Closed cylinder
- One set of soft jaws
- Hydraulic Tailstock
- Hydraulic Power pack
- Coolant supply equipment
- Centralized lubrication equipment
- Chip trolley
- Work light
- Foot Switch
- 8 Station bi- directional turret
- "Pragati BTP-63" with 3 boring & 1-face grooving tool holder "Pragati BTP-80" for A2-6 spindle
- Set of Manuals
- Machine mounting pads

### OPTIONAL ACCESSORIES

- Chip conveyor
- Coolant gun
- Panel A/C
- Parts catcher / Tray
- Air blast for chuck jaw cleaning
- Aden Lamp (Yellow / red / green)
- Additional boring sleeves
- Collet chuck
- Hollow cylinder
- Pragati 12 station BTP 63 Turret (Tool Shank 16/16mm/ boring Bar Size Dia 25mm)
- Pragati 8 station BTP80 Turret (A2-5LB)

MAKE YOURSELF MORE COMPETITIVE WITH **KELLER PROGRAMMING SOFTWARE & ARNO CUTTING TOOLS**



Programming software, reduce your machining time without altering your existing setup of speed and feed (also on any existing machine).

Cutting tools. Improve your product quality and reduce production cost through enhanced tool life.

# GEDEE WEILER

A CUT ABOVE THE REST

**GEDEE WEILER PRIVATE LIMITED**, Vellalore Road, Podanur PO. Coimbatore - 641 023, Tamil Nadu, INDIA.  
EPABX: +91-422 2413908, 804 and 048 E-mail: sales@gdweiler.com Website: www.gdweiler.com



# TECHNICAL SPECIFICATIONS

| DESCRIPTION                        | UNITURN 300 <b>HD</b> TM                      |                                   |                                      | UNITURN 300 <b>HD</b> TM             |                                                                                 |                                                                                 | UNITURN 400 <b>HD</b> TM                                                               |                                                                                        |                                                                                        |
|------------------------------------|-----------------------------------------------|-----------------------------------|--------------------------------------|--------------------------------------|---------------------------------------------------------------------------------|---------------------------------------------------------------------------------|----------------------------------------------------------------------------------------|----------------------------------------------------------------------------------------|----------------------------------------------------------------------------------------|
|                                    | UNIT                                          | UT-42                             | UT-51                                | UT-42 TM                             | UT-51TM                                                                         | UT-42 TM                                                                        | UT-51TM                                                                                | UT-42 TM                                                                               | UT-51TM                                                                                |
| <b>CAPACITY</b>                    | Swing over bed- dia                           | 475                               | 475                                  | 475                                  | 475                                                                             | 475                                                                             | 475                                                                                    | 475                                                                                    | 475                                                                                    |
|                                    | Swing over cross slide cover-dia              | 225                               | 225                                  | 225                                  | 225                                                                             | 225                                                                             | 225                                                                                    | 225                                                                                    | 225                                                                                    |
|                                    | Admit Between centers min/max                 | 70/300                            | 70/300                               | 70/300                               | 70/300                                                                          | 70/300                                                                          | 70/300                                                                                 | 70/300                                                                                 | 70/300                                                                                 |
|                                    | Maximum turning dia. & Length                 | 225 x 300                         | 225 x 220                            | 225 x 220                            | 150x 170                                                                        | 150x 155                                                                        | 170 x 300                                                                              | 170 x 300                                                                              | 170 x 285                                                                              |
|                                    | Maximum bar capacity-dia                      | 42*                               | 51*                                  | 51*                                  | 42 *                                                                            | 51 *                                                                            | 42*                                                                                    | 42*                                                                                    | 51*                                                                                    |
| <b>SPINDLE</b>                     | Chuck size-dia                                | 165                               | 200                                  | 200                                  | 165                                                                             | 200                                                                             | 165                                                                                    | 200                                                                                    | 200                                                                                    |
|                                    | Spindle through bore-dia                      | 58                                | 63                                   | 63                                   | 58                                                                              | 63                                                                              | 58                                                                                     | 63                                                                                     | 63                                                                                     |
|                                    | Spindle nose DIN 55026                        | A2-5 LB                           | A2-6                                 | A2-6                                 | A2-5 LB                                                                         | A2-6                                                                            | A2-5 LB                                                                                | A2-6                                                                                   | A2-6                                                                                   |
|                                    | Spindle Speed                                 | 50-4000                           | 50-4000                              | 50-4000                              | 50-4000                                                                         | 50-4000                                                                         | 50-4000                                                                                | 50-4000                                                                                | 50-4000                                                                                |
|                                    | Spindle C axis (Live Tool)                    | NA                                | NA                                   | NA                                   | Continuous feed                                                                 | Continuous feed                                                                 | Continuous Feed                                                                        | Continuous Feed                                                                        | Continuous Feed                                                                        |
| <b>TRAVEL</b>                      | X axis travel                                 | 155                               | 155                                  | 155                                  | 130                                                                             | 130                                                                             | 155                                                                                    | 155                                                                                    | 155                                                                                    |
|                                    | Z axis travel                                 | 340                               | 340                                  | 340                                  | 340                                                                             | 340                                                                             | 590                                                                                    | 590                                                                                    | 590                                                                                    |
| <b>FEED RATE</b>                   | Rapid traverse X axis                         | 20                                | 20                                   | 20                                   | 20                                                                              | 20                                                                              | 20                                                                                     | 20                                                                                     | 20                                                                                     |
|                                    | Rapid traverse Z axis                         | 25                                | 25                                   | 25                                   | 25                                                                              | 25                                                                              | 25                                                                                     | 25                                                                                     | 25                                                                                     |
|                                    | Feed Rate                                     | 6000                              | 6000                                 | 6000                                 | 6000                                                                            | 6000                                                                            | 6000                                                                                   | 6000                                                                                   | 6000                                                                                   |
| <b>TURRET</b>                      | Type                                          | BTP63                             | BTP80                                | BTP80                                | DTT80                                                                           | DTT80                                                                           | DTT80                                                                                  | DTT80                                                                                  | DTT80                                                                                  |
|                                    | No. of tool positions                         | 8                                 | 8                                    | 8                                    | 8                                                                               | 8                                                                               | 12-2 pitch diameter                                                                    | 12-2 pitch diameter                                                                    | 12-2 pitch diameter                                                                    |
|                                    | Tool Shank size                               | 20 x 20                           | 25X25                                | 25X25                                | 20 x 20                                                                         | 20 x 20                                                                         | 20 x 20                                                                                | 20 x 20                                                                                | 20 x 20                                                                                |
|                                    | Boring Bar size-dia                           | 32                                | 40                                   | 40                                   | 30x16/30x25/30x20/30x32                                                         | 30x16/30x25/30x20/30x32                                                         | 30x16/30x25/30x20/30x32                                                                | 30x16/30x25/30x20/30x32                                                                | 30x16/30x25/30x20/30x32                                                                |
| <b>LIVE TOOL TURRET (Optional)</b> | Live Tool Motor                               | NA                                | NA                                   | NA                                   | Siemens-12 Nm - 4500rpm / Fanuc-α12is - 4000rpm / Mitsubishi - HF224S - 3000rpm | Siemens-12 Nm - 4500rpm / Fanuc-α12is - 4000rpm / Mitsubishi - HF224S - 3000rpm | Siemens - 12 Nm - 4500 rpm / Fanuc - α12is - 4000 rpm / Mitsubishi - HF224S - 3000 rpm | Siemens - 12 Nm - 4500 rpm / Fanuc - α12is - 4000 rpm / Mitsubishi - HF224S - 3000 rpm | Siemens - 12 Nm - 4500 rpm / Fanuc - α12is - 4000 rpm / Mitsubishi - HF224S - 3000 rpm |
|                                    | Live Tool speed                               | RPM                               | NA                                   | NA                                   | 50-3000                                                                         | 50-3000                                                                         | 50-3000                                                                                | 50-3000                                                                                | 50-3000                                                                                |
|                                    | Tool Shank                                    | NA                                | NA                                   | NA                                   | VDI 30 (DIN5480)                                                                | VDI 30 (DIN5480)                                                                | VDI 30 (DIN 5480) Spoorthi/WTO                                                         | VDI 30 (DIN 5480) Spoorthi/WTO                                                         | VDI 30 (DIN 5480) Spoorthi/WTO                                                         |
| <b>TAILSTOCK</b>                   | Quill dia                                     | 55                                | 55                                   | 55                                   | 55                                                                              | 55                                                                              | 60                                                                                     | 60                                                                                     | 60                                                                                     |
|                                    | Quill Stroke                                  | 110                               | 110                                  | 110                                  | 110                                                                             | 110                                                                             | 100                                                                                    | 100                                                                                    | 100                                                                                    |
|                                    | Quill Taper                                   | MT4                               | MT4                                  | MT4                                  | MT4                                                                             | MT4                                                                             | MT5                                                                                    | MT5                                                                                    | MT5                                                                                    |
| <b>MACHINE SIZE</b>                | Floor Space(L x W x H)                        | 1900x2100x1560                    | 1900x2100x1560                       | 1900x2100x1560                       | 1900x2100x1560                                                                  | 1900x2100x1560                                                                  | 2200x1700x2050                                                                         | 2200x1700x2050                                                                         | 2200x1700x2050                                                                         |
|                                    | Machine Weight (Approx)                       | 2000                              | 2050                                 | 2050                                 | 2300                                                                            | 2350                                                                            | 2700                                                                                   | 2700                                                                                   | 2750                                                                                   |
| <b>CNC CONTROLLER</b>              | Siemens/Fanuc/Mitsubishi                      | 808D PPU 161 / 828D /Oi TF / E-80 | V3 - 7.5KW Fanuc/ Miti/ 7 KW Siemens | V2 - 5.5 KW Siemens/Fanuc/Mit        | 828D /Oi TF / E-80                                                              | V3 - 7.5KW Fanuc/ Miti/7 KW Siemens                                             | V2 - 5.5 KW Siemens/Fanuc/Mit                                                          | V2 - 5.5 KW Siemens/Fanuc/Mit                                                          | V3 - 7.5KW Fanuc/ Miti/7 KW Siemens                                                    |
|                                    | Spindle motor rated power (Continuous rating) | V2 - 5.5 KW Siemens/Fanuc/Mit     | V3 - 7.5KW Fanuc/ Miti/ 7 KW Siemens | V3 - 7.5KW Fanuc/ Miti/ 7 KW Siemens | V2 - 5.5 KW Siemens/Fanuc/Mit                                                   | V3 - 7.5KW Fanuc/ Miti/7 KW Siemens                                             | V2 - 5.5 KW Siemens/Fanuc/Mit                                                          | V2 - 5.5 KW Siemens/Fanuc/Mit                                                          | V3 - 7.5KW Fanuc/ Miti/7 KW Siemens                                                    |

\* Max bar size vary with respect to draw bar bush thickness.

NOTE : Due to continuous upgradation of our products, the specifications are subject to change without notice.