

UNITURN 400 H ϕ TM

STANDARD ACCESSORIES

- Hydraulic 165X3 Jaw chuck and Closed cylinder (A2-5LB)
- Hydraulic 200X3 Jaw chuck and Closed cylinder (A2-6)
- One set of soft jaws
- Hydraulic Tailstock
- Hydraulic Power pack
- Coolant supply equipment
- Centralized lubrication equipment
- Chip trolley
- Work light
- Foot Switch for Chuck
- 12 Station-2 Pitch disc bidirectional "PRAGATI DTT 80" Live tool Turret
- Set of Manuals

TOOL HOLDERS

- RH Turning - 4
- RH Radial (Reverse) - 1
- RH Axial Tool Holder - 1
- Boring Tool Holder - 4
- Boring Bar Dia 30x16, 30x20, 30x32, 30x25
- Set of Machine Mounting pads

OPTIONAL ACCESSORIES

- Chip Conveyor
- Coolant gun
- Panel A/C
- Parts catcher/Tray
- Air Blast for Chuck jaw cleaning
- Aden Lamp (Yellow/Red/Green)
- Collet chuck
- Hollow cylinder
- Sauter turret with live tools
- Axial Live Tool Head
- Radial Live Tool Head
- Foot switch for tailstock
- 2Jaw chuck
- 4Jaw chuck
- Bar puller

UNITURN 300 H ϕ TM

STANDARD ACCESSORIES

- Hydraulic 165X3 Jaw chuck and Closed cylinder (A2-5LB)
- Hydraulic 200X3 Jaw chuck and Closed cylinder (A2-6)
- One set of soft jaws
- Hydraulic Tailstock
- Hydraulic Power pack
- Coolant supply equipment
- Centralized lubrication equipment
- Chip trolley
- Work light
- Foot Switch for Chuck
- 12 Station-2 Pitch disc bidirectional "PRAGATI DTT 80" Live tool Turret
- Set of Manuals

TOOL HOLDERS

- RH Turning - 4
- RH Radial (Reverse) - 1
- RH Axial Tool Holder - 1
- Boring Tool Holder - 4
- Boring Bar Dia 30x16, 30x20, 30x32, 30x25
- Set of Machine Mounting pads

OPTIONAL ACCESSORIES

- Chip Conveyor
- Coolant gun
- Panel A/C
- Parts catcher/Tray
- Air Blast for Chuck jaw cleaning
- Aden Lamp (Yellow/Red/Green)
- Collet chuck
- Hollow cylinder
- Sauter turret with live tools
- Axial Live Tool Head
- Radial Live Tool Head
- Foot switch for tailstock
- 2Jaw chuck
- 4Jaw chuck
- Bar puller

UNITURN 300 H ϕ

STANDARD ACCESSORIES

- Hydraulic chuck and Closed cylinder
- One set of soft jaws
- Hydraulic Tailstock
- Hydraulic Power pack
- Coolant supply equipment
- Centralized lubrication equipment
- Chip trolley
- Work light
- Foot Switch
- 8 Station bi- directional turret
- "Pragati BTP-63" with 3 boring & 1-face grooving tool holder
- "Pragati BTP-80" for A2-6 spindle
- Set of Manuals
- Machine mounting pads

OPTIONAL ACCESSORIES

- Chip conveyor
- Coolant gun
- Panel A/C
- Parts catcher / Tray
- Air blast for chuck jaw cleaning
- Aden Lamp (Yellow / red / green)
- Additional boring sleeves
- Collet chuck
- Hollow cylinder
- Pragati 12 station BTP 63 Turret (Tool Shank 16/16mm/ boring Bar Size Dia 25mm)
- Pragati 8 station BTP80 Turret (A2-5LB)

MAKE YOURSELF MORE COMPETITIVE WITH **KELLER PROGRAMMING SOFTWARE & ARNO CUTTING TOOLS**



Programming software, reduce your machining time without altering your existing setup of speed and feed (also on any existing machine).

Cutting tools. Improve your product quality and reduce production cost through enhanced tool life.

UNIVERSAL CNC LATHES

RIGID. PRECISE. FLEXIBLE

HEAVY DUTY AND COMPACT CNC LATHES



GEDEE WEILER

A CUT ABOVE THE REST

GEDEE WEILER PRIVATE LIMITED, Vellore Road, Podanur P.O. Coimbatore - 641 023, Tamil Nadu, INDIA.
EPABX: +91-422 2413908, 804 and 048 E-mail: sales@gdweiler.com Website: www.gdweiler.com



INDIA'S No.1 EXPORTER of lathes to GERMANY

GEDEE WEILER

A CUT ABOVE THE REST

A UNIQUE CNC LATHE THAT STANDS OUT

Uniturn 400HD TM, Uniturn 300HD TM & Uniturn 300 HD

Heavy duty CNC machines with advanced features which are flexible enough to meet your Turning & Milling requirements delivering highest precision.

UNITURN 400 HD TM



UNITURN 300 HD TM



Rigid...

Precise...

Flexible...

SADDLE



Machine is highly rigid as it is equipped with best in class heavy duty LM Roller Guides with wide span between.

SPINDLE



Our spindles known for their legendary precision (run out < 0.003mm) are housed in a specially designed circular head stock without thermal distortion and expansion fitted with precision angular contact ball bearings and roller bearings that enable take up high axial and radial loads.

TURRET



A wide variety of turrets are available like Pragati BTP 63/80 with live tool turrets of 8 station or 12 station of Indian or imported makes can also be offered on UT 300 HD, UT 400HD TM as per customers choice.

BRAKE



Hydraulic disc brake ensures positive clamping of spindle for flawless radial and axial live tool operations

SPECIAL ACCESSORIES

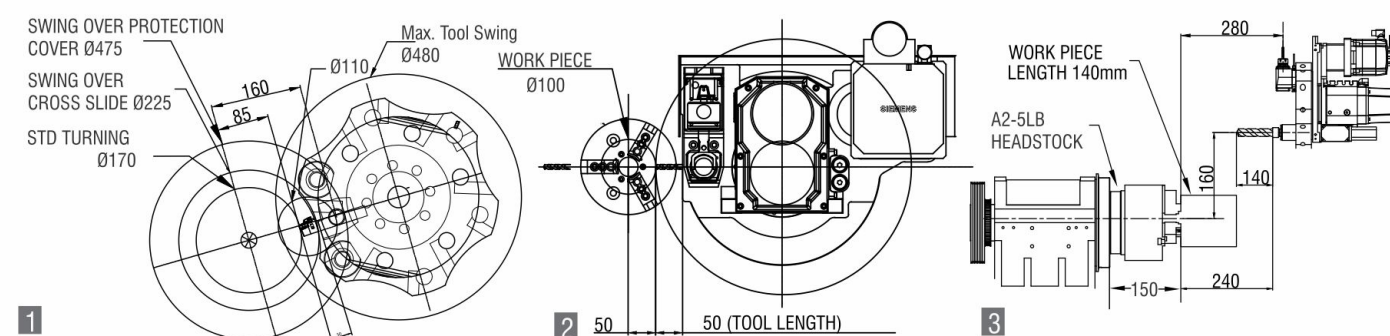


Our rich experience in offering special work holding devices like Hainbuch collect attachments, Angular tool heads, Hydro grip / through coolant multi jet tool holders etc. makes the machine flexible to suit the customer needs.



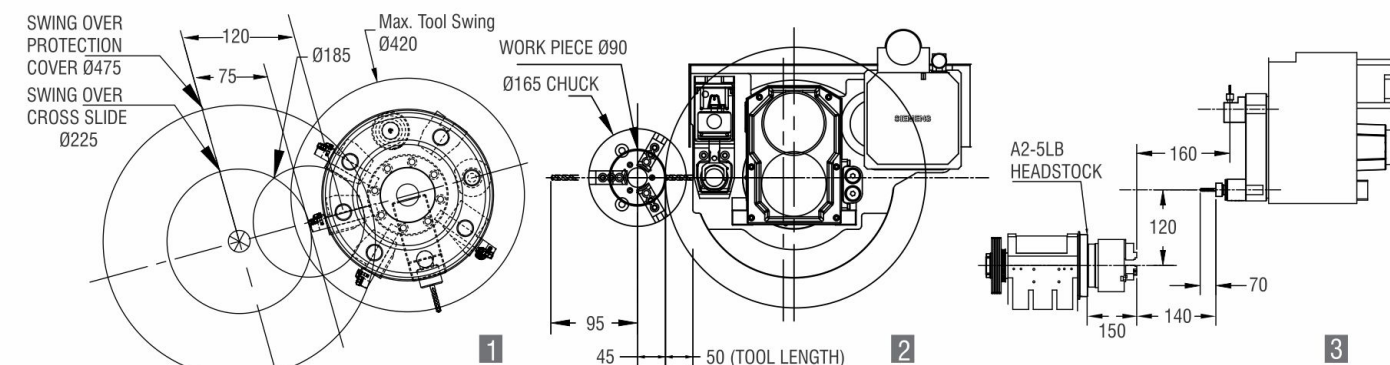
Our special accessories like bar feeder, bar puller, parts catcher, High pressure coolant system etc. render the machine more versatile.

UNITURN 400 HD TM - TOOL INTERFERENCE DIAGRAM (DTT 80 WITH 12 STATION-2 PITCH)



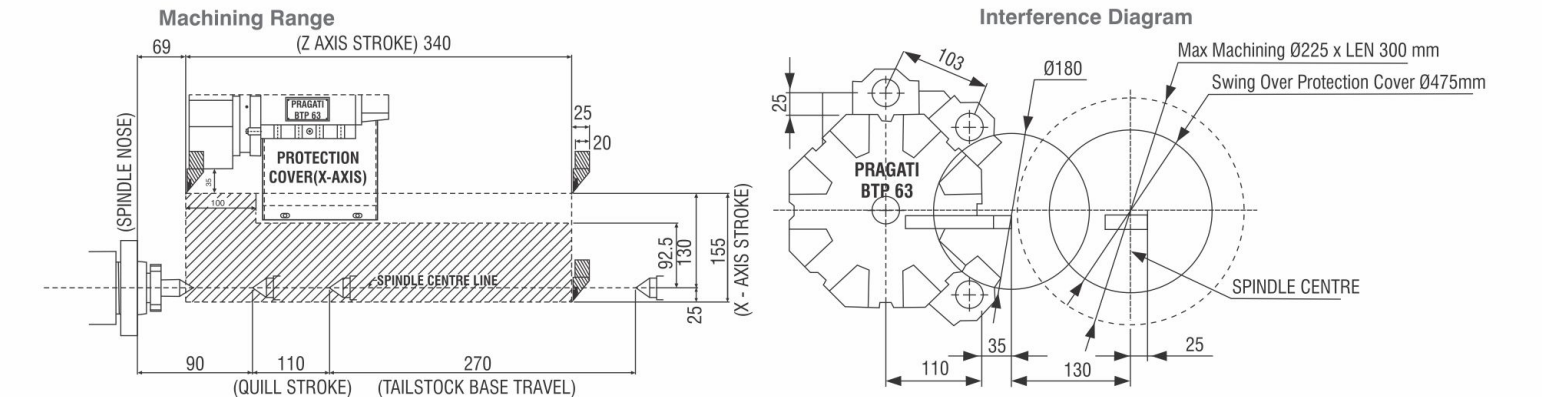
1 Max turning Ø170 when turning tool holder is mounted on the inner PCD (240mm). Max Turning (Ø100) when turning tool holder mounted on outer PCD (308mm). During facing max diameter should not exceed Ø110mm when facing tool holder is mounted on inner pcd 240mm and two adjacent holders are either turning or boring holders.
2 Max drill length 50mm on offset radial live tool head when job diameter Ø100mm.
3 Max axial drilling depth 140mm when facing tool Length is 140mm.

UNITURN 300 HD TM- TOOL INTERFERENCE DIAGRAM DTT 80 WITH 8 STATION



1 Max Ø185 when turning tool holder is at job center and when two adjacent holders are either turning or boring holders
2 Max drill length on radial live tool head and max job diameter (Ø90mm) for radial drilling.
3 Max job length (70mm) that can be drilled with axial live tool head.

UNITURN 300 HD - TOOL INTERFERENCE DIAGRAM (BTP 63 - 8 STATION)



Note: Please consult us with component drawings, operations required for selection of suitable specification and features. * Also consult us for 12 station interference diagram. **Consult us for A2-6 interference diagram.

TECHNICAL SPECIFICATIONS

DESCRIPTION		UNIT	UNITURN 300 <i>HD</i>		UNITURN 300 <i>HD</i> TM		UNITURN 400 <i>HD</i> TM	
			UT-42	UT-51	UT-42 TM	UT-51TM	UT-42 TM	UT-51TM
CAPACITY	Swing over bed- dia	mm	475		475		475	
	Swing over cross slide cover-dia	mm	225		225		225	
	Admit Between centers min/max	mm	70/300		70/300		45/400	
	Maximum turning dia.& Length	mm	225 x 300	225 x 220	150x 170	150x 155	170 x 300	170 x 285
	Maximum bar capacity-dia	mm	42*	51*	42 *	51*	42*	51*
SPINDLE	Chuck size-dia	mm	165	200	165	200	165	200
	Spindle through bore-dia	mm	58	63	58	63	58	63
	Spindle nose DIN 55026	type	A2-5 LB	A2-6	A2-5 LB	A2-6	A2-5 LB	A2-6
	Spindle Speed	rpm	50-4000		50-4000		50-4000	
	Spindle C axis (Live Tool)		NA		Continuous feed		Continuous Feed	
TRAVEL	X axis travel	mm	155		130		155	
	Z axis travel	mm	340		340		590	
FEED RATE	Rapid traverse X axis	mts./min	20		20		20	
	Rapid traverse Z axis	mts./min	25		25		25	
	Feed Rate	mm/min	6000		6000		6000	
TURRET	Type		BTP63	BTP80	DTT80		DTT80	
	No.of tool positions	No	8	8	8		12-2 pitch diameter	
	Tool Shank size	mm	20 x 20	25X25	20 x 20		20 x 20	
	Boring Bar size-dia	mm	32	40	30x16/30x25/30x20/30x32		30x16/30x25/30x20/30x32	
LIVE TOOL TURRET (Optional)	Live Tool Motor		NA		Siemens-12 Nm - 4500rpm / Fanuc-α12is - 4000rpm / Mitsubishi - HF224S - 3000rpm		Siemens - 12 Nm - 4500 rpm / Fanuc - α12is - 4000 rpm / Mitsubishi - HF224S - 3000 rpm	
	Live Tool speed	RPM	NA		50-3000		50-3000	
	Tool Shank		NA		VDI 30 (DIN5480)		VDI 30 (DIN 5480) Spoorthi/WTO	
TAILSTOCK	Quill dia	mm	55		55		60	
	Quill Stroke	mm	110		110		100	
	Quill Taper	type	MT4		MT4		MT5	
MACHINE SIZE	Floor Space(L x W x H)	mm	1900x2100x1560		1900x2100x1560		2200x1700x2050	
CNC CONTROLLER	Machine Weight (Approx)	kg	2000	2050	2300	2350	2700	2750
	Siemens/Fanuc/Mitsubishi	type	808D PPU 161 / 828D /Oi TF / E-80		828D /Oi TF / E-80		828D /Oi TF/ E-80	
MOTOR POWER	Spindle motor rated power (Continuous rating)	KW	V2 - 5.5 KW Siemens/Fanuc/Mit	V3 - 7.5KW Fanuc/ Mit/ 7 KW Siemens	V2 - 5.5 KW Siemens/Fanuc/Mit	V3 - 7.5KW Fanuc/ Mit/7 KW Siemens	V2 - 5.5 KW Siemens/Fanuc/Mit	V3 - 7.5KW Fanuc/ Mit/7 KW Siemens

* Max bar size vary with respect to draw bar bush thickness.

NOTE : Due to continuous upgradation of our products, the specifications are subject to change without notice.

TECHNICAL SPECIFICATIONS

DESCRIPTION		UNIT	UNITURN 300 <i>HD</i>		UNITURN 300 <i>HD</i> TM		UNITURN 400 <i>HD</i> TM	
			UT-42	UT-51	UT-42 TM	UT-51TM	UT-42 TM	UT-51TM
CAPACITY	Swing over bed- dia	mm	475		475		475	
	Swing over cross slide cover-dia	mm	225		225		225	
	Admit Between centers min/max	mm	70/300		70/300		45/400	
	Maximum turning dia. & Length	mm	225 x 300	225 x 220	150x 170	150x 155	170 x 300	170 x 285
	Maximum bar capacity-dia	mm	42*	51*	42 *	51*	42*	51*
SPINDLE	Chuck size-dia	mm	165	200	165	200	165	200
	Spindle through bore-dia	mm	58	63	58	63	58	63
	Spindle nose DIN 55026	type	A2-5 LB	A2-6	A2-5 LB	A2-6	A2-5 LB	A2-6
	Spindle Speed	rpm	50-4000		50-4000		50-4000	
	Spindle C axis (Live Tool)		NA		Continuous feed		Continuous Feed	
TRAVEL	X axis travel	mm	155		130		155	
	Z axis travel	mm	340		340		590	
FEED RATE	Rapid traverse X axis	mts./min	20		20		20	
	Rapid traverse Z axis	mts./min	25		25		25	
	Feed Rate	mm/min	6000		6000		6000	
TURRET	Type		BTP63	BTP80	DTT80		DTT80	
	No.of tool positions	No	8	8	8		12-2 pitch diameter	
	Tool Shank size	mm	20 x 20	25X25	20 x 20		20 x 20	
	Boring Bar size-dia	mm	32	40	30x16/30x25/30x20/30x32		30x16/30x25/30x20/30x32	
LIVE TOOL TURRET (Optional)	Live Tool Motor		NA		Siemens-12 Nm - 4500rpm / Fanuc-α12is - 4000rpm / Mitsubishi - HF224S - 3000rpm		Siemens - 12 Nm - 4500 rpm / Fanuc - α12is - 4000 rpm / Mitsubishi - HF224S - 3000 rpm	
	Live Tool speed	RPM	NA		50-3000		50-3000	
	Tool Shank		NA		VDI 30 (DIN5480)		VDI 30 (DIN 5480) Spoorthi/WTO	
TAILSTOCK	Quill dia	mm	55		55		60	
	Quill Stroke	mm	110		110		100	
	Quill Taper	type	MT4		MT4		MT5	
MACHINE SIZE	Floor Space(L x W x H)	mm	1900x2100x1560		1900x2100x1560		2200x1700x2050	
CNC CONTROLLER	Machine Weight (Approx)	kg	2000	2050	2300	2350	2700	2750
	Siemens/Fanuc/Mitsubishi	type	808D PPU 161 / 828D /Oi TF / E-80		828D /Oi TF / E-80		828D /Oi TF/ E-80	
MOTOR POWER	Spindle motor rated power (Continuous rating)	KW	V2 - 5.5 KW Siemens/Fanuc/Mit	V3 - 7.5KW Fanuc/ Mit/ 7 KW Siemens	V2 - 5.5 KW Siemens/Fanuc/Mit	V3 - 7.5KW Fanuc/ Mit/7 KW Siemens	V2 - 5.5 KW Siemens/Fanuc/Mit	V3 - 7.5KW Fanuc/ Mit/7 KW Siemens

* Max bar size vary with respect to draw bar bush thickness.

NOTE : Due to continuous upgradation of our products, the specifications are subject to change without notice.