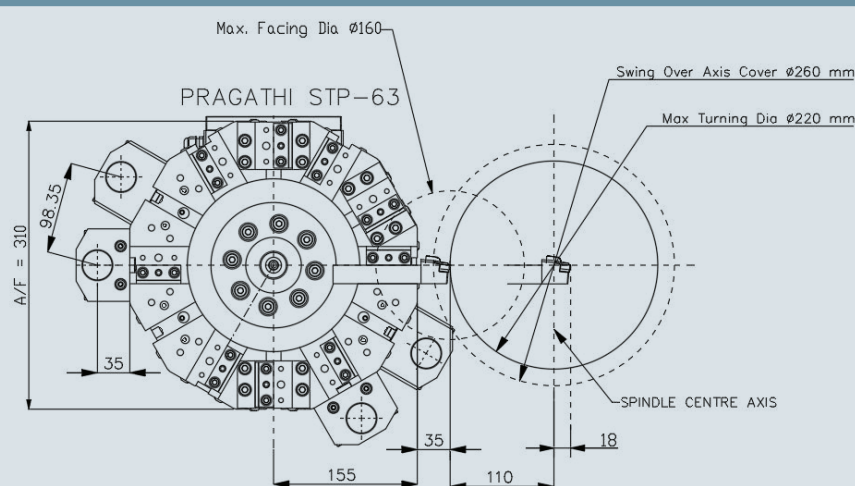
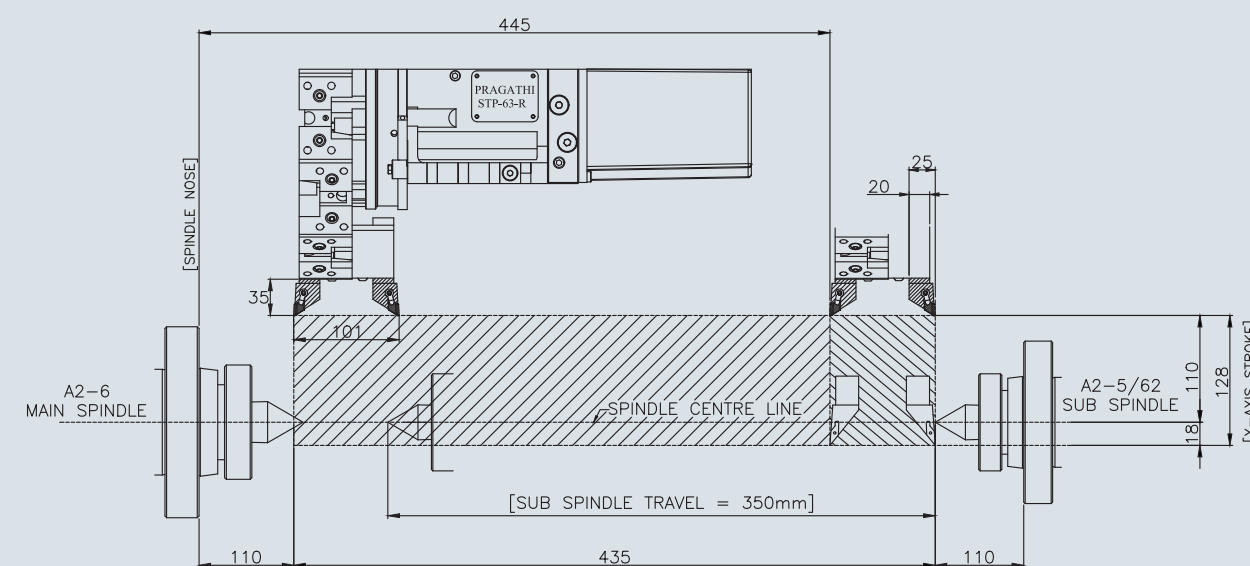


### MACHINING RANGE UNITURN-350 DUO -STP 63



#### STANDARD ACCESSORIES

- Foot Switches
- Centralised Lubrication System
- Cast Iron Mount
- High Dual-pressure Coolant Pump With 8/4 Bar Pressure
- Stp-63: 12 St Servo Indexing/ Hydraulic Locking Turret With Two-Sided Disc & Standard Tool Holders
- Main Spindle - A2-6/ A2-5 LB
- Sub Spindle-A2-5/62
- Work Holding Main Spindle : 3 Jaw Chuck - 165 Dia / 200 Dia
- Work Holding Sub Spindle : 3 Jaw Chuck - 165 Dia
- Hydraulic Power Pack With Accumulator
- Panel Ac
- Addon Lamp
- Safety Switch For Door Interlock

#### OPTIONAL ACCESSORIES

##### Optional Accessories-(Work Holding- Main Spindle):

- Collet Attachment - A42/A60 (GDW)
- Collet Attachment - CL42/CL60 (Tonfou)
- Hainbuch Collet Attachment
- Long Stroke Chuck (To Enable Multi-stage Machining Of Shafts)
- Soft Jaws

##### Optional Accessories-(Work Holding- Sub Spindle):

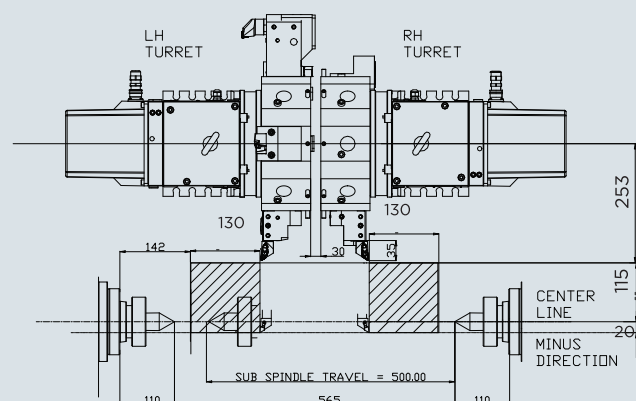
- Collet Attachment - A42, (GDW)
- Collet Attachment -CL42 (Tonfou)
- Hainbuch Collet Attachment
- Long Stroke Chuck (To Enable Multi-stage Machining Of Shafts)
- Soft Jaws

##### Other Optional Accessories:

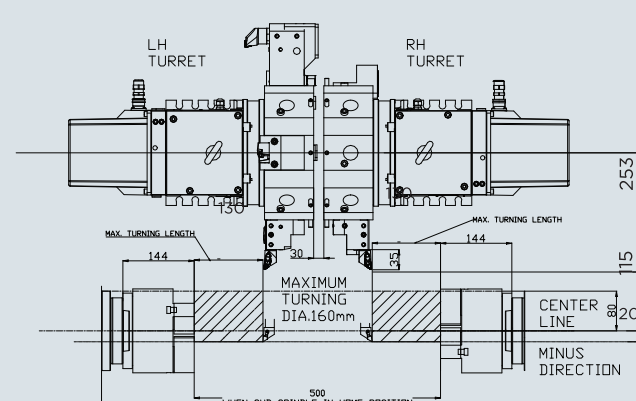
- Chip Conveyor (Right-side Disposal)
- Pneumatic Part Catcher (Dia 40mm / Length - 70mm For Round Parts)
- Ejector For Sub Spindle
- Additional Headstock Side Coolant Provision
- ER20-collet Assembly
- Pneumatic Auto Door / Servo Auto Door
- Set Of Nylon Bushes For Main Spindle
- Bar Feeder Interfacing - Hyd / Servo
- Barfeeder-model-hyd / Servo - 1.2 Mtrs / 1.5 Mtrs / 3mtrs
- Spindle Support Unit For Bar Feeder

### MACHINING RANGE UNITURN-500 DUO TT

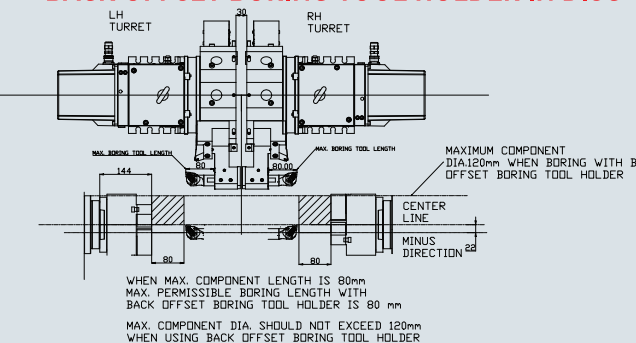
#### TURNING TOOL TRAVEL



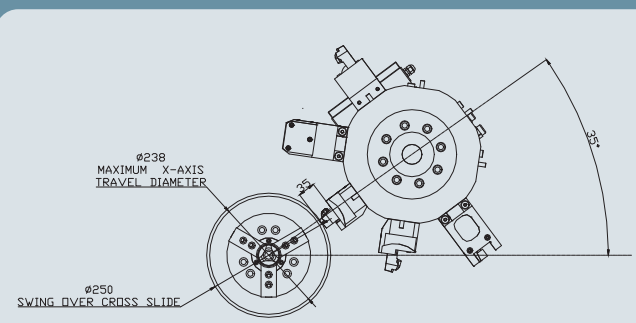
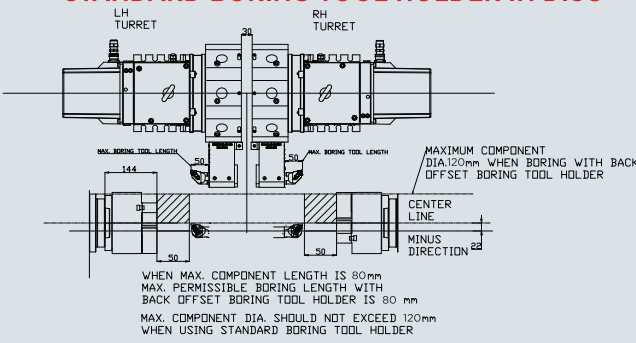
#### TURNING TOOL TRAVEL WITH DIA.165 CHUCK



#### BORING TOOL TRAVEL WITH BACK OFFSET BORING TOOL HOLDER IN DISC



#### BORING TOOL TRAVEL WITH STANDARD BORING TOOL HOLDER IN DISC



#### OPTIONAL ACCESSORIES

##### (Work Holding- Main Spindle/Work Holding- Sub Spindle)

- \* Collet Attachment - A42 (Gdw)
- \* Collet Attachment - CL42 (Tonfou)
- \* Hainbuch Collet Attachment
- \* Soft Jaws
- \* Long Stroke Chuck (To Enable Clamping Behind The Collar Which Is Larger In Diameter)

#### OTHER OPTIONAL ACCESSORIES

- \* Additional Headstock Side Coolant Provision
- \* ER20-collet Assembly
- \* Pneumatic Auto Door / Servo Auto Door
- \* Set Of Nylon Bushes For Main Spindle

- \* Bar Feeder Interfacing - Hyd / Servo
- \* Barfeeder-model-hyd / Servo - 1.2 Mtrs / 1.5 Mtrs / 3mtrs
- \* Part Catcher
- \* Ejector For Sub-spindle
- \* Custom Made Ejector Back Stopper
- \* Spindle Support Unit For Bar Feeder
- \* Chip Conveyor (Right-side Disposal)

#### STANDARD ACCESSORIES

- \* Foot Switches
- \* Centralised Lubrication System
- \* Cast Iron Mount
- \* High Dual-pressure Coolant Pump With 8/4 Bar Pressure
- \* Stp-80: 8 St Vdi 30 Servo Indexing/ Hydraulic Locking Turret With Special Tool Holders On Both Sides
- \* Main Spindle - A2-5/62
- \* Sub Spindle - A2-5/62
- \* Work Holding Main Spindle : 165 X 3 Jaw Chuck
- \* Work Holding Sub Spindle : 165 X 3 Jaw Chuck
- \* Hydraulic Power Pack With Accumulator
- \* Panel Ac
- \* Addon Lamp
- \* Safety Switch For Door Interlock

SUB SPINDLE SERIES - DUO LINE

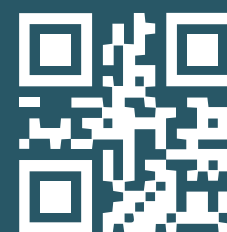


Programming software, reduce your machining time without altering your existing setup of speed and feed (also on any existing machine).  
Cutting tools. Improve your product quality and reduce production cost through enhanced tool life.

### GEDEE WEILER PRIVATE LIMITED

Vellalore Road, Podanur P.O.  
Coimbatore - 641 023, Tamil Nadu, INDIA.  
EPABX: +91-422 2413908, 804 and 048  
E: sales@gdweiler.com  
W: www.gdweiler.com

Faridabad Tech Center, Shed No.65-a,  
Sector-31, Opp. Encoders India,  
Hsiidc Industrial Estate, Faridabad,  
Haryana -121003 Ph: 0129-4301505  
Email:salesdelhi@gdweiler.com



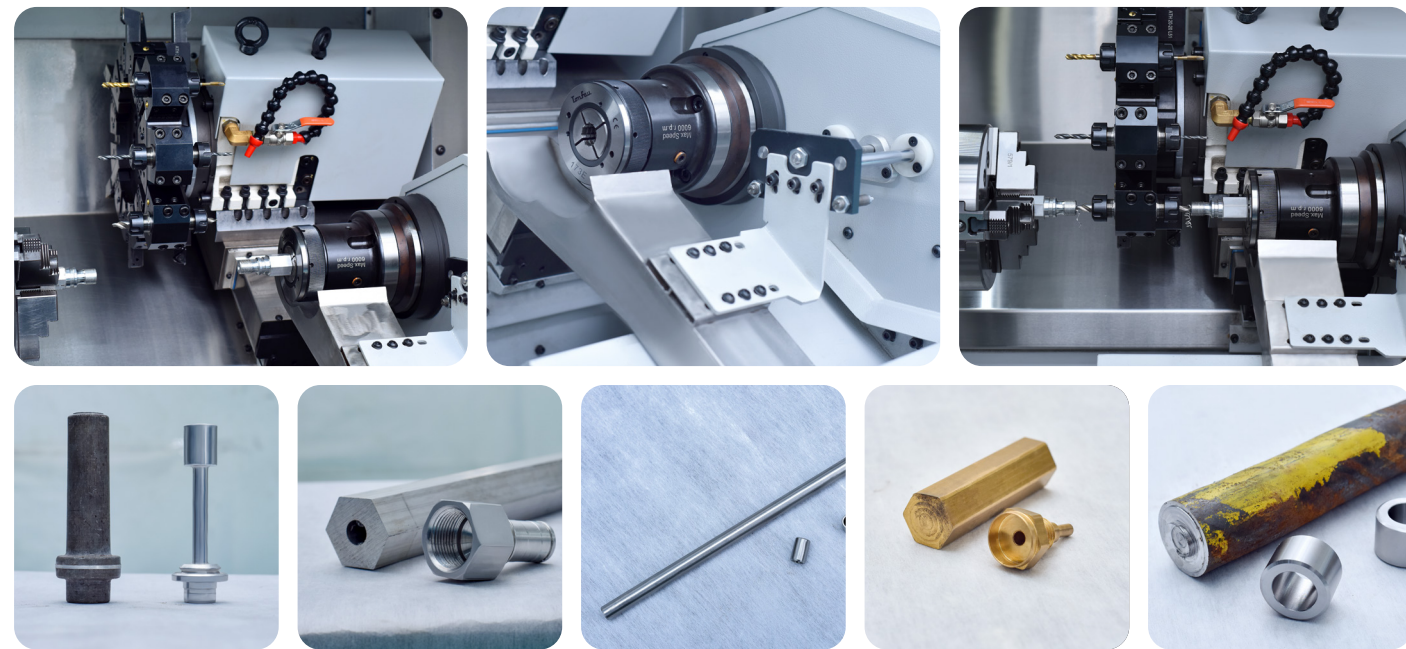
**MADE IN INDIA**  
MADE FOR THE WORLD

**GEDEE WEILER**  
INNOVATE • TRANSFORM • INSPIRE

# UT-350 DUO

## CNC TURNING CENTRE WITH SUB SPINDLE

- Compact CNC Turning Centre with Sub Spindle for 1st & 2nd operation on the same machine
  - On the fly transfer of component
- Simultaneous Facing, Drilling & Tapping to enable higher productivity

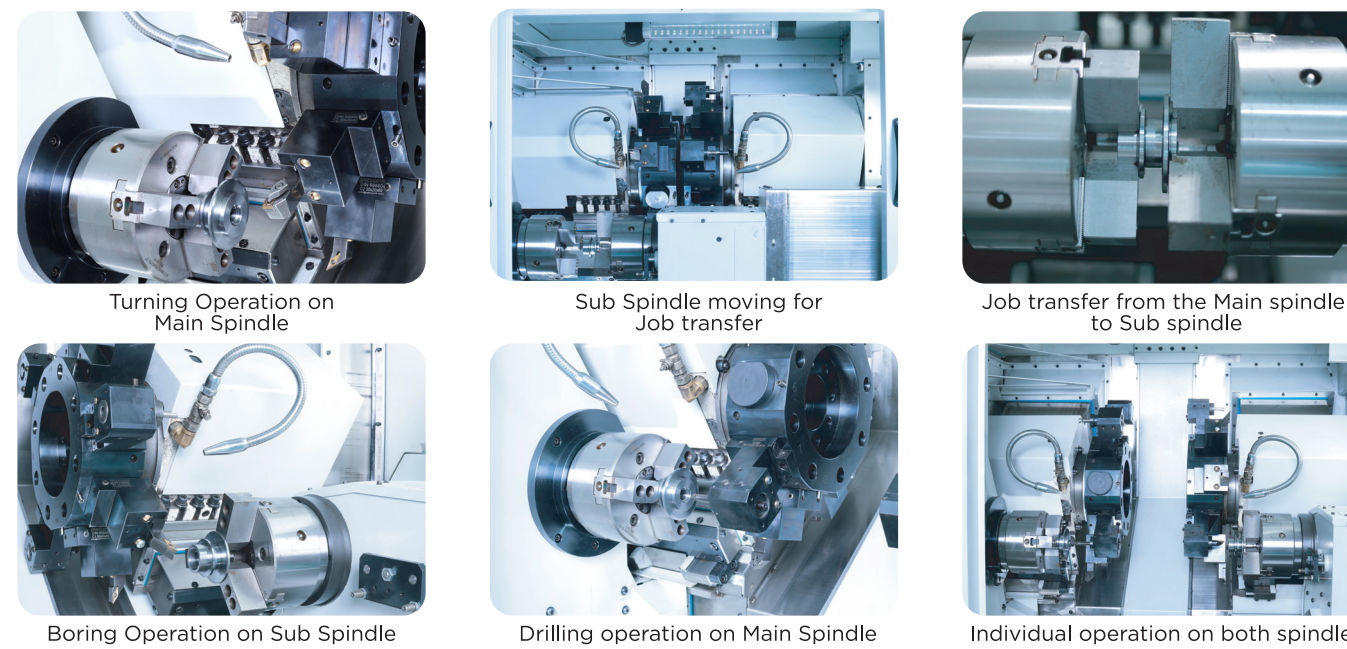
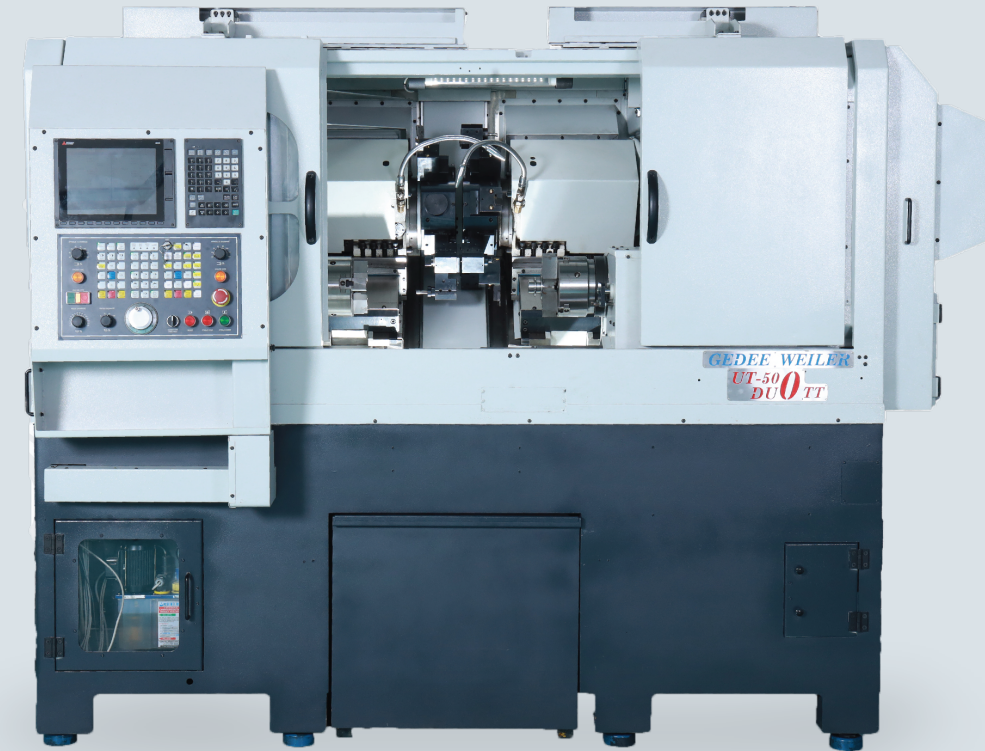


- Max bar size vary with respect to draw bar bush thickness
- Depends upon Selection of chuck/collet, clamping arrangement and Tooling & Job

# UT-500 DUO TT

## TWIN SPINDLE | TWIN TURRET | CNC LATHE

- Symmetric machine design with twin Spindles/twin turrets
- Synchronous control ensures high accuracy part transfer
- Simultaneous machining of 1st & 2nd operation



- Max bar size vary with respect to draw bar bush thickness
- Depends upon Selection of chuck/collet, clamping arrangement and Tooling & Job.

### UT-350 DUO WITH TURRET/UT-500 DUO TWIN TURRET - TECHNICAL SPECIFICATIONS

TYPE	DESCRIPTION	UNIT	UT-350 DUO	UT-500 DUO TT
MAIN SPINDLE CAPACITY	Swing Over - Axis Cover	mm	260**	250
	Between Center	mm	350**	490**
	Maximum Turning Length	mm	290**	130**
	Maximum Turning Dia	mm	220**	230**
	Maximum Bar Capacity-dia	mm	42* 51*	42*
MAIN SPINDLE	Chuck Size	mm	155	Ø165
	Collet Size	mm	A-42/CL-42	A-42/CL-42
	Spindle Bore	mm	58	63
	Spindle Nose Dm 55026	mm	A2-5LB	A2-6
	Spindle Speed	rpm	50-4000	50-4000
SUB SPINDLE CAPACITY (OPERATION-II)	Swing Over - Axis Cover	mm	260	250
	Maximum Turning Length	mm	290**	130**
	Maximum Turning Dia	mm	220	230**
	Maximum Bar Capacity-dia	mm	42*	42*
	Chuck Size	mm	155	Ø165
SUB SPINDLE	Collet	mm	A-42/CL-42	A-42/CL-42
	Spindle Bore	mm	62	62
	Spindle Nose Dm 55026	mm	A2-5LB	A2-5/62
	Spindle Speed	rpm	50-4000	50-4000
	X-Axis (X1 / X2)	mm	135	135
TRAVEL	Z Axis (Z1 / Z2)	mm	460	160
	Sub Spindle	mm	350	490
FEED RATE	Rapid Traverse X Axis (+X / -X)	mts./min	20	20
	Rapid Traverse Z Axis (+Z / -Z)	mts./min	25	25
TOOLING / TURRET	Rapid Traverse - Sub Spindle	mts./min	20	20
	Feed Rate	mm/min	6000	6000
MACHINE SIZE	No. of Turret	Nos	1	2
	No. of Tool Stations	Nos	12	8
MOTOR POWER (MAIN SPINDLE)	Tool Mounting	-	-	VDI 30
	Tool Shank Size	mm	20X20	20 x 20
MOTOR POWER (SUB SPINDLE)	Maximum Tool Holding Dia.	mm	32	Ø32
	Machine Height	mm	1900	2000
CNC CONTROLLER	Floor Space (Without Bar Feeder)	mm	3900 X 3600	4000 x 4000***
	Machine Weight (Approx.)	kg	3500	6000
MOTOR POWER (SUB SPINDLE)	Fanuc/Mitsubishi	type	0i TF+ / M-80A	0iTF-/M-80A
	Spindle Motor Rated Power	kw	5.5KW / 7.5KW (FANUC / MITSUBISHI)	5.5KW/7.5KW (FANUC/MITSUBISHI)
MOTOR POWER (SUB SPINDLE)	Spindle Motor Rated Power	Kw	3.7KW (FANUC/MITSUBISHI)	3.7KW/5.5KW (FANUC/MITSUBISHI)

\*Max bar size vary with respect to draw bar bush thickness \*\*Depends upon Selection of chuck/collet, clamping arrangement and Tooling & Job  
 \*\*\*Without chip conveyor and bar feeder  
 NOTE: Due to continuous upgrading of our products, the specifications are subject to change without notice