

**SUB SPINDLE - TURN MILL - CNC LATHE**

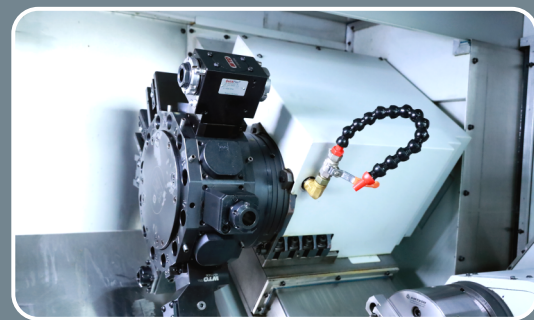
# *UT-50 DU<sup>0</sup>™*



Legacy continues..



- ▶ Uniquely designed for High Precision, Multitasking and Higher Productivity
- ▶ Synchronous control ensures high accuracy part transfer
- ▶ Simultaneous machining of 1st & 2nd Operation



INDIA'S No.1 EXPORTER  
of lathes to GERMANY



INDIA'S NO.1 EXPORTER of lathes to GERMANY

**GEDEE WEILER**

INNOVATE • TRANSFORM • INSPIRE

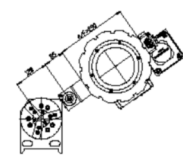
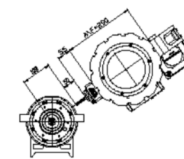
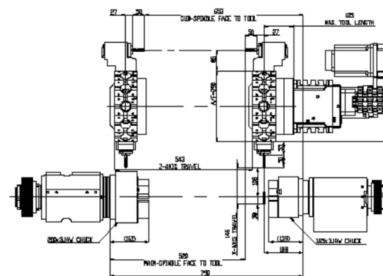
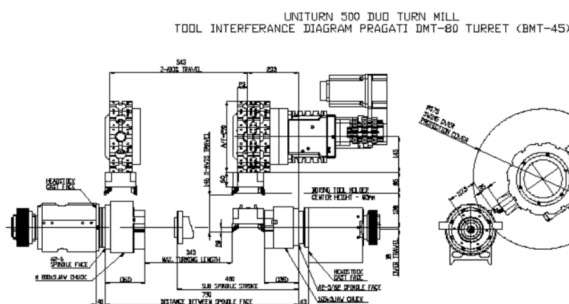
UNITURN-500 DUO TURNMILL - TECHNICAL SPECIFICATIONS				
TYPE	DESCRIPTION	UNIT	UT 42/42	UT51/42
MAIN SPINDLE CAPACITY	SWING OVER - AXIS COVER	mm	575	
	DISTANCE BETWEEN CHUCK JAW FACE TO CHUCK JAW FACE	mm	510**	490**
	MAXIMUM TURNING LENGTH	mm	360**	340**
	MAXIMUM TURNING DIA	mm	230**	230**
	MAXIMUM BAR CAPACITY-DIA	mm	42*	51*
MAIN SPINDLE	CHUCK SIZE	mm	Ø165	Ø200
	COLLET SIZE	type	A-42/CL-42	A-60/CL-60
	SPINDLE BORE	mm	58	63
	SPINDLE NOSE DIN 55026	type	A2-5 LB	A2-6
	SPINDLE SPEED	rpm	50-4000	
SUB SPINDLE CAPACITY	SWING OVER - AXIS COVER	mm	250	
	MAXIMUM TURNING LENGTH	mm	350**	
	MAXIMUM TURNING DIA	mm	260**	
	MAXIMUM BAR CAPACITY-DIA	mm	42*	
SUB SPINDLE	CHUCK SIZE	mm	169	
	COLLET	type	A-42/CL-42	
	SPINDLE BORE	mm	62	
	SPINDLE NOSE DIN 55026	type	A2-5/62	
	SPINDLE SPEED	rpm	50-4000	
TRAVEL	X AXIS	mm	146	
	Z AXIS	mm	543	
	SUB SPINDLE	mm	490	
FEED RATE	RAPID TRAVERSE X AXIS (+X / -X)	mts./min	20	
	RAPID TRAVERSE Z AXIS (+Z / -Z)	mts./min	25	
	RAPID TRAVERSE - SUB SPINDLE	mts./min	20	
	FEED RATE	mm/min	6000	
TOOLING	TOOL DISC INDEXING METHOD	Type	SERVO MOTOR DRIVE	
	LIVE TOOL MOTOR		FANUC-12iS -4000/ MITSUBISHI HG224S-4000	
	NO.OF TOOL STATIONS	Nos	12	
	LIVE TOOL MOUNTING	mm	BMT-45	
	TOOL SHANK SIZE	mm	20X20	
	BORING MOUNT SIZE MAX.	mm	Ø32	
	LIVE TOOL SPEED	RPM	50-4000	
MACHINE SIZE	MACHINE HEIGHT	mm	2200	
	FLOOR SPACE	mm	4000x4000***	
	MACHINE WEIGHT (Approx.)	kg	6000	
CNC CONTROLLER	FANUC/MITSUBISHI	type	Oi TF+ / M-80A	
MOTOR POWER (MAIN SPINDLE)	SPINDLE MOTOR RATED POWER (CONTINUOUS RATING)	KW	5.5KW/7.5KW (FANUC/MITSUBISHI)	
MOTOR POWER (SUB SPINDLE)	SPINDLE MOTOR RATED POWER (CONTINUOUS RATING)	KW	3.7KW/5.5KW (FANUC/MITSUBISHI)	
* Max bar size vary with respect to draw bar bush thickness				
** Depends upon Selection of chuck/collet, clamping arrangement and Tooling & Job				
*** Without chip conveyor and bar feeder				
<b>NOTE</b> : Due to continuous upgradation of our products, the specifications are subject to change without notice.				

## STANDARD ACCESSORIES

- Foot Switches
- Centralised Lubrication System
- Cast Iron Mount
- High Dual-pressure Coolant Pump With 8/4 Bar Pressure
- DMT 80 Turret- 12 Stations Servo Indexing/ Hydraulic Locking BMT 45 Live Tool Mounting
- Main Spindle -A2-6/ A2-5 LB
- Sub Spindle - A2-5/62
- Work Holding Main Spindle: Ø165 X 3 Jaw / Ø 200 X 3 Jaw
- Work Holding Sub-spindle : Ø165 X 3 Jaw
- Hydraulic Power Pack With Accumulator
- Panel Ac
- Addon Lamp
- Safety Switch For Door Interlock

## OPTIONAL ACCESSORIES

- Collet Attachment - A42/A60 (GDW)
- Collet Attachment - CL42/CL60 (Tonfou)
- Hainbuch Collet Attachment
- Soft Jaws
- Special Back Stopper
- Long Stroke Chuck (to Enable Clamping Behind The Collar Which Is Larger In Diameter)
- Additional Headstock Side Coolant Provision
- ER20-collet Assembly
- Pneumatic Auto Door / Servo Auto Door
- Set Of Nylon Bushes For Main Spindle
- Bar Feeder Interfacing - Hyd / Servo
- Barfeeder-model-hyd / Servo - 1.2 Mtrs / 1.5 Mtrs / 3mtrs
- Spindle Support Unit For Bar Feeder
- Ejector For Sub-spindle
- Custom-made Ejector Back Stopper
- Chip Conveyor (right-side Disposal)



# GEDEE WEILER

INNOVATE • TRANSFORM • INSPIRE

GEDEE WEILER PRIVATE LIMITED, Vellalore Road, Podanur P.O. Coimbatore - 641023, Tamilnadu, INDIA  
 EPABX: +91 - 422 2413908 / 804 & 048, Email: sales@gdweiler.com | Website: www.gdweiler.com  
 Faridabad Tech Center, Shed No.65- A, Sector - 31, Opp.Encoders India,Hsiidc industrial Estate, Faridabad  
 Hariyana - 121003. Ph:0129-4301505 | Email: saledelhi@gdweiler.com

INDIA'S No.1 EXPORTER  
 of lathes to GERMANY

